



INNOVATION PROFESSION EXECUTION

RoHS
Compliant

Splendi **Tech 6** CCFLs Inverter

IN6-QF343110I

Splendi **Tech**. Corp., Ltd.

www.splendi.com.tw

E-mail: sales@splendi.com.tw

Tel: 886-2-2647-6609

Fax: 886-2-2647-6619

Address: 2F.-3, No.263, Sec. 2, Datong Rd., Sijhih City, Taipei County 221, Taiwan

© Copyright 2010 Splendi Tech. Inc., all rights reserved.

Introduction

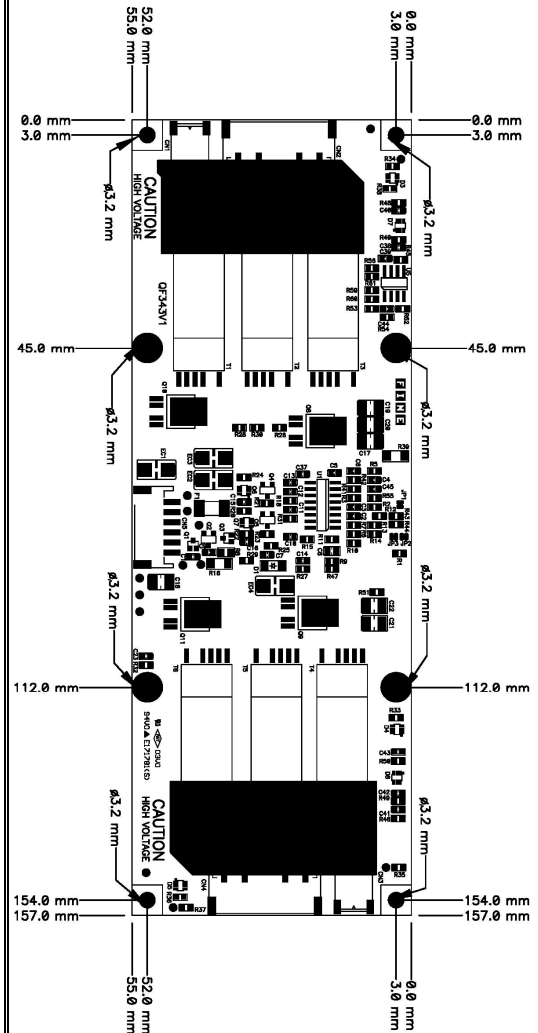
The Splendi IN6-QF343110I DC To AC inverter is designed with 6 ccfls which is able to drive 6-tube backlight. With the advantages of low noise and high frequency, and as a low profile and light weight switching power supply, it's compatible to the LCD panels of AUO, CMO, Kyocera, Samsung, Sharp, NEC, Mitsubishi and LG...etc.

Features

- Applicable to 6 tubes backlight
- Constant current output
- Possesses open load protection when lamp is open
- No load-output auto stop
- Meet TCO 99

Dimension (L x W x H):
157mm x 55mm x 7.5mm

Weight: Max. 62g



Operating Conditions

Item	Symbol	Condition	Min.	Max.	Unit
Input Voltage	Vin		10	-	V
Operating Temperature	Top	Ha=90%	-20	85	°C
Storage Temperature	Tstg	Ha=95%	-30	105	°C
Operating Humidity	Hop	Ta=0 ~ 55 °C	20	90	%RH
Storage Humidity	Hstg	Ta=20 ~ 80 °C	-	95	%RH

Operating Characteristics

Parameter	Symbol	Condition	Min.	Typ.	Max.	Unit
Input Voltage	Vin	GND=0V	11.2	12	13.2	V
Input Current (Low Brightness)	IinL	Vin=Typ. ±1%ON VR=Min. (Iout=Min.)	900	1150	1400	mA CV=5.0V
Input Current (High Brightness)	IinH	Vin=Typ. ±1% ON VR=Max. (Iout=Max.)	1750	2000	2250	mA CV=0.0V
Lamp Current (Low Brightness)	IoutL	Vin=Typ. ±1%ON VR=Min. (Iout=Min.)	0.6	1.1	1.6	mA / rms CV=5.0V
Lamp Current (High Brightness)	IoutH	Vin=Typ. ±1%ON VR=Max. (Iout=Max.)	3	3.5	4.0	mA / rms CV=0.0V
Working Frequency			57.5	60.5	63.5	KHz
Dimming		Tube Current	>2.5:1	-	-	
Brightness Control		Connection of Voltage	5	-	0	V
Output Voltage		CCFT Current= 5 mA	-	830	-	V

Connector Socket

(CN5) Input Connector

Pin No.	Symbol	Description
1	Vin	DC +12V
2	Vin	DC +12V
3	Control	ON/OFF Control ON=+3~5V, OFF=0~0.8V
4	Brightness	Digital Brightness Control
5	GND	Ground
6	GND	Ground

(CN1、3) Output Connector

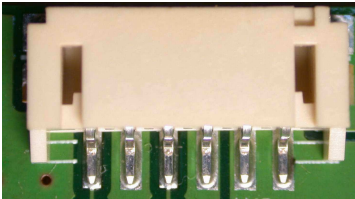
Pin No.	Symbol	Description
1	Output	Lamp High Voltage
2	Output	Lamp Low Voltage

(CN2、4) Output Connector

Pin No.	Symbol	Description
1	Output	Lamp High Voltage
2	Output	Lamp High Voltage
3	Output	Lamp Low Voltage
4	Output	Lamp Low Voltage

Connector Model No. & Brand

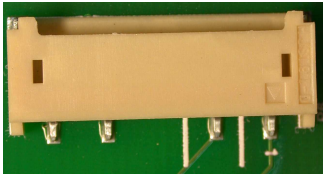
Connector No.	Symbol	Description
CN1, CN3	SM02B	JST or Compatible
CN2, CN4	SM04(9-E2)	JST or Compatible
CN5	S6B-PH-SM4	JST or Compatible



S6B-PH-SM4 (Pin1) ↑



SM02B (Pin1) ↑



SM04(9-E2) ↑