



INNOVATION PROFESSION EXECUTION

RoHS  
Compliant

## Splendi **Tech** 2 CCFLs Inverter

**IN2-QF099200**

Splendi **Tech**. Corp., Ltd.

[www.splendi.com.tw](http://www.splendi.com.tw)

E-mail: [sales@splendi.com.tw](mailto:sales@splendi.com.tw)

Tel: 886-2-2647-6609

Fax: 886-2-2647-6619

Address: 2F.-3, No.263, Sec. 2, Datong Rd., Sijhih City, Taipei County 221, Taiwan

© Copyright 2010 Splendi Tech. Inc., all rights reserved.

## Introduction

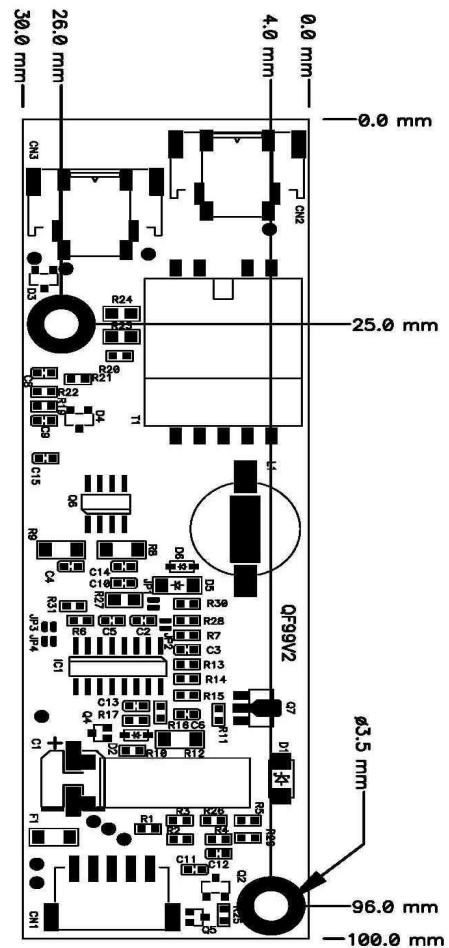
The Splendi IN2-QF099200 DC To AC inverter is designed with 2 ccfls which is able to drive 2-tube backlight. With the advantages of low noise and high frequency, and as a low profile and light weight switching power supply, it's compatible to the LCD panels of AUO, CMO, Kyocera, Samsung, Sharp, NEC, Mitsubishi and LG...etc.

## Features

- Applicable to 2 tubes backlight
- Constant current output
- Possesses open load protection when lamp is open
- No load-output auto stop
- Meet TCO 99

Dimension (L x W x H):  
100mm x 30mm x 11mm

Weight: Max. 31g



## Operating Conditions

Item	Symbol	Condition	Min.	Max.	Unit
Input Voltage	Vin		10	14	V
Operating Temperature	Top	Ha=90%	0	65	°C
Storage Temperature	Tstg	Ha=95%	-10	80	°C
Operating Humidity	Hop	Ta=0 ~ 55 °C	20	90	%RH
Storage Humidity	Hstg	Ta=20 ~ 80 °C	-	95	%RH

## Operating Characteristics

Parameter	Symbol	Condition	Min.	Typ.	Max.	Unit
Input Voltage	Vin	GND=0V	10.8	12	13.2	V
Input Current (Low Brightness)	IinL	Vin=Typ. ±1%ON VR=Min. (Iout=Min.)	280	340	410	mA CV=4.9V
Input Current (High Brightness)	IinH	Vin=Typ. ±1% ON VR=Max. (Iout=Max.)	630	700	750	mA CV=0.2V
Lamp Current (Low Brightness)	IoutL	Vin=Typ. ±1%ON VR=Min. (Iout=Min.)	1.8	2.2	2.7	mA / rms CV=4.9V
Lamp Current (High Brightness)	IoutH	Vin=Typ. ±1%ON VR=Max. (Iout=Max.)	5.5	6.0	6.5	mA / rms CV=0.2V
Working Frequency			40	45	50	KHz
Dimming		Tube Current				
Brightness Control		Connection of Voltage	5		0	V
Output Voltage		CCFT Current= 6 mA		620		V

## Connector Socket

---

### (CN1) Input Connector

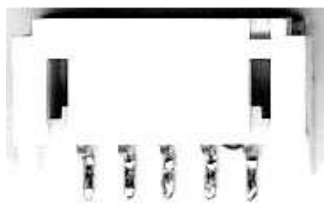
Pin No.	Symbol	Description
1	Vin	DC +12V
2	GND	Ground
3	Control	ON/OFF Control ON=+3 ~ 5V, OFF=0 ~0.8V
4	Brightness	Digital Brightness Control
5	NC	

### (CN2 ~ 3) Output Connector

Pin No.	Symbol	Description
1	Output	Lamp High Voltage
2	Output	Lamp Low Voltage

### Connector Model No. & Brand

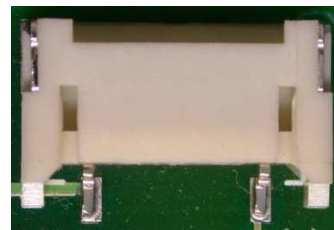
Connector No.	Symbol	Description
CN1	S5B-PH-SM4	JST or compatible
CN2	SM02(8.0)B-BDBS-1 or SM02(8.0)B-BHS-1	JST or compatible
CN3	SM02(8.0)B-BDBS-1 or SM02(8.0)B-BHS-1	JST or compatible



S5B-PH-SM4 (Pin1)



SM02 (8.0)B-BDBS-1 (Pin1)



SM02 (8.0)B-BHS-1 (Pin1)