



INNOVATION PROFESSION EXECUTION

RoHS
Compliant

Splendi **Tech** 2 CCFLs Inverter

IN2-QF082412

Splendi **Tech**. Corp., Ltd.

www.splendi.com.tw

E-mail: sales@splendi.com.tw

Tel: 886-2-2647-6609

Fax: 886-2-2647-6619

Address: 2F.-3, No.263, Sec. 2, Datong Rd., Sijhih City, Taipei County 221, Taiwan

© Copyright 2010 Splendi Tech. Inc., all rights reserved.

Introduction

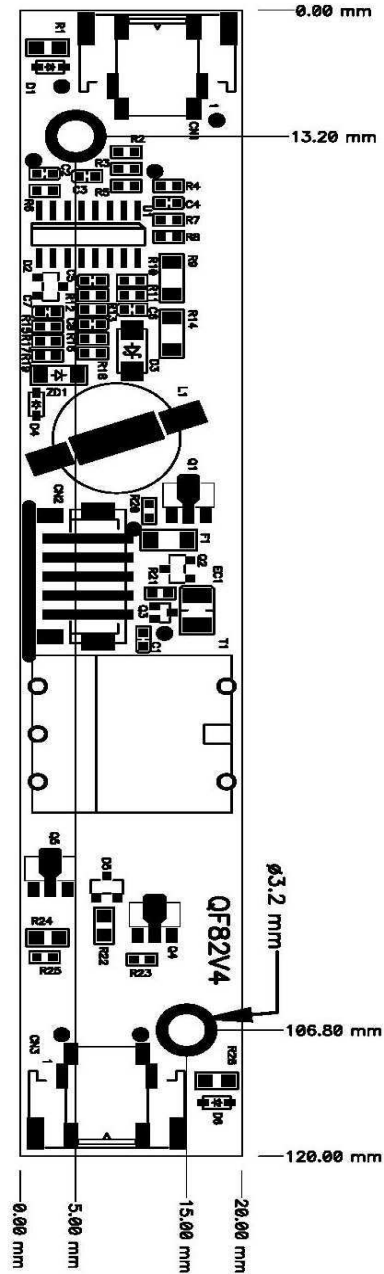
The Splendi IN2-QF082412 DC To AC inverter is designed with 2 ccfls which is able to drive 2-tube backlight. With the advantages of low noise and high frequency, and as a low profile and light weight switching power supply, it's compatible to the LCD panels of AUO, CMO, Kyocera, Samsung, Sharp, NEC, Mitsubishi and LG...etc.

Features

- Applicable to 2 tubes backlight
- Constant current output
- Possesses open load protection when lamp is open
- No load-output auto stop
- Meet TCO 99

Dimension (L x W x H):
120mm x 20mm x 10mm

Weight: Max. 24g



Operating Conditions

Item	Symbol	Condition	Min.	Max.	Unit
Input Voltage	Vin		10	-	V
Operating Temperature	Top	Ha=90%	-20	85	°C
Storage Temperature	Tstg	Ha=95%	-30	105	°C
Operating Humidity	Hop	Ta=0 ~ 55 °C	20	90	%RH
Storage Humidity	Hstg	Ta=20 ~ 80 °C	-	95	%RH

Operating Characteristics

Parameter	Symbol	Condition	Min.	Typ.	Max.	Unit
Input Voltage	Vin	GND=0V	10.8	12	13.2	V
Input Current (Low Brightness)	IinL	Vin=Typ. ±1%ON VR=Min. (Iout=Min.)	200	280	350	mA CV=5.0V
Input Current (High Brightness)	IinH	Vin=Typ. ±1% ON VR=Max. (Iout=Max.)	620	700	780	mA CV=0.0V
Lamp Current (Low Brightness)	IoutL	Vin=Typ. ±1%ON VR=Min. (Iout=Min.)	1.4	2.0	2.6	mA / rms CV=5.0V
Lamp Current (High Brightness)	IoutH	Vin=Typ. ±1%ON VR=Max. (Iout=Max.)	7.4	7.9	8.4	mA / rms CV=0.2V
Lamp Current (High Brightness)	IoutH	Vin=Typ. ±1%ON VR=Max. (Iout=Max.)	7.6	8.1	8.6	mA / rms CV=0.0V
Working Frequency			47	50	53	KHz
Dimming		Tube Current	>2:1			
Brightness Control		Connection of Voltage	5		0	V
Output Voltage		CCFT Current= 6 mA		450		V

Connector Socket

(CN2) Input Connector

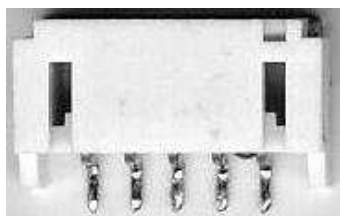
Pin No.	Symbol	Description
1	Vin	DC +12V
2	GND	Ground
3	Control	ON/OFF Control ON=+3 ~ 5V, OFF=0 ~0.8V
4	Brightness	Digital Brightness Control
5	NC	

(CN1&CN 3) Output Connector

Pin No.	Symbol	Description
1	Output	Lamp High Voltage
2	Output	Lamp Low Voltage

Connector Model No. & Brand

Connector No.	Symbol	Description
CN2	S5B-PH-SM4	JST or compatible
CN1	SM02(8.0)B-BDBS-1 or SM02(8.0)B-BHS-1	JST or compatible
CN3	SM02(8.0)B-BDBS-1 or SM02(8.0)B-BHS-1	JST or compatible



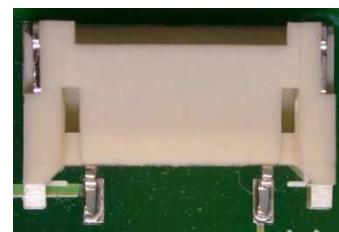
S5B-PH-SM4

(Pin1)



SM02 (8.0)B-BDBS-1

(Pin1)



SM02 (8.0)B-BHS-1

(Pin1)